

545400-The Carson Playhouse (\$14.99)

AW Release Date: 20/10/16

Purpose: Printing version

IM Size: 101 X 127MM

C&P Designer/Leader: David Ye / Cary Yip

UK Designer: Leigh Potter

Game/PT Designer: Tom Zhang / Wing Liu

vtech[®]

Parent's Guide

TOOT-TOOT
CORY
CARSON[®]

The Carson Playhouse



91-003946-000 (UK)

VTech understands that a child's needs and abilities change as they grow and with that in mind we develop our toys to teach and entertain at just the right level...

vtech Baby

Toys that will stimulate their interest in different textures, sounds and colours

I am...

...responding to colours, sounds and textures

...understanding cause and effect

...learning to touch, reach, grasp, sit-up, crawl and toddle

Birth-36 months



Pre-School

Interactive toys to develop their imagination and encourage language development

I want...

...to get ready for school by starting to learn the alphabet and counting

...my learning to be as fun, easy and exciting as can be

...to show my creativity with drawing and music so my whole brain develops

3-6 years



Electronic Learning Computers

Cool, aspirational and inspiring computers for curriculum related learning

I need...

...challenging activities that can keep pace with my growing mind

...intelligent technology that adapts to my level of learning

...National Curriculum based content to support what I'm learning at school

4-10 years

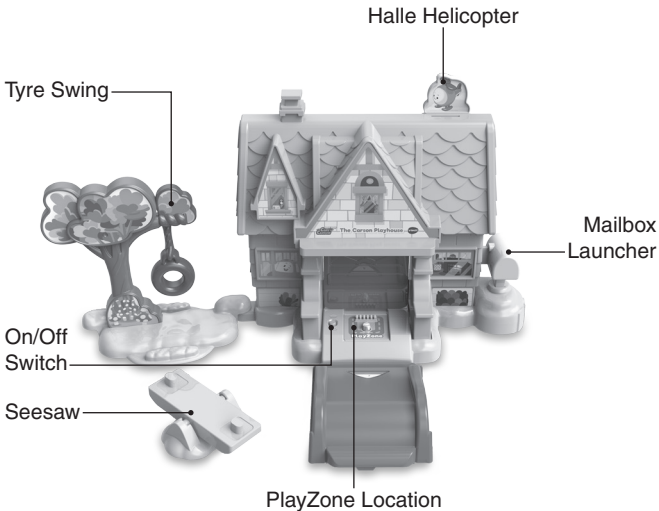


To learn more about this and other VTech® products, visit www.vtech.co.uk

INTRODUCTION

Thank you for purchasing the **VTech® Toot-Toot Cory Carson® The Carson Playhouse!**

Get ready to play with Cory and Chrissy in their playhouse. Place the mini characters on the PlayZone location to hear fun phrases and sounds. Then, press the mailbox to launch the character.



Mini Cory



Mini Chrissy

INCLUDED IN THIS PACKAGE



One mini Cory



One mini Chrissy



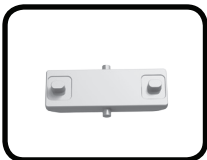
One Halle piece



One house



One base



One seesaw



One seesaw base



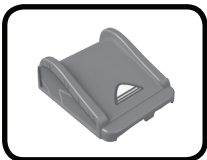
One tyre swing



One tree



One tree base



One ramp track

- One label sheet
- One Parent's Guide

WARNING

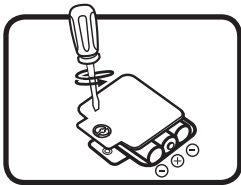
All packing materials such as tape, plastic sheets, packaging locks, removable tags, cable ties, cords and packaging screws are not part of this toy and should be discarded for your child's safety.

NOTE: Please keep this Parent's Guide as it contains important information.

GETTING STARTED

Battery Removal and Installation

1. Make sure the unit is turned **Off**.
2. Locate the battery cover on the bottom of the **Base**. Then, use a screwdriver to loosen the screw and remove the cover.
3. Remove old batteries by pulling up on one end of each battery.
4. Install 3 new AAA (AM-4/LR03) batteries following the diagram inside the battery box. (The use of new alkaline batteries is recommended for maximum performance).
5. Replace the battery cover and tighten the screw to secure.



BATTERY NOTICE

- Use new alkaline batteries or fully charged NI-MH (Nickel Metal-hydride) rechargeable batteries for best performance.
- Use only batteries of the same or equivalent type as recommended.
- Do not mix different types of batteries: alkaline, standard (carbon-zinc), rechargeable or new and used batteries.
- Do not use damaged batteries.
- Insert batteries with the correct polarity (+ and -).

- Do not short-circuit the battery terminals.
- Remove exhausted batteries from the toy.
- Remove batteries during long periods of non-use.
- Do not dispose of batteries in fire.
- Do not charge non-rechargeable batteries.
- Remove rechargeable batteries from the toy before charging (if removable).
- Rechargeable batteries are only to be charged under adult supervision.

WARNING:

Adult assembly required for battery installation.

Keep batteries out of reach of children.

Disposal of batteries and product



The crossed-out wheellie bin symbols on products and batteries, or on their respective packaging, indicates they must not be disposed of in domestic waste as they contain substances that can be damaging to the environment and human health.

The chemical symbols Hg, Cd or Pb, where marked, indicate that the battery contains more than the specified value of mercury (Hg), cadmium (Cd) or lead (Pb) set out in Battery Directive (2006/66/EC).



The solid bar indicates that the product was placed on the market after 13th August, 2005.

Help protect the environment by disposing of your product or batteries responsibly.

VTech® cares for the planet.

Care for the environment and give your toy a second life by disposing of it at a small electricals collection point so all its materials can be recycled.

In the UK:

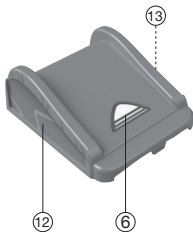
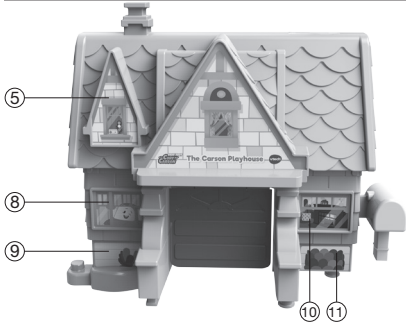
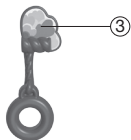
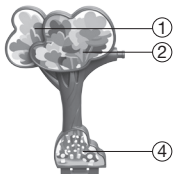
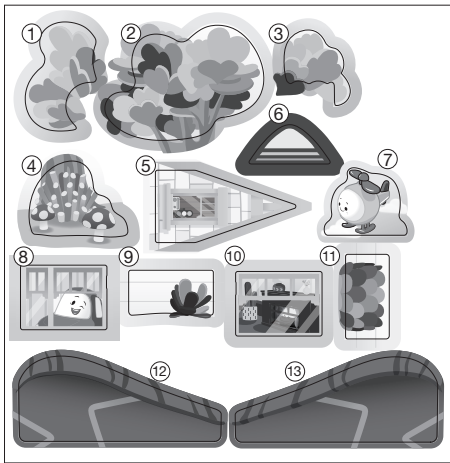
Visit www.recyclenow.com to see a list of collection points near you.

In Australia & New Zealand:

Check with you local council for kerbside collections.

LABEL APPLICATION

Please securely stick the labels to the play set as indicated below:



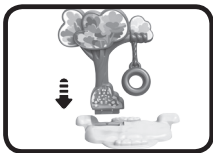
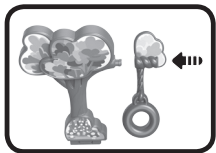
ASSEMBLY INSTRUCTIONS

With **The Carson Playhouse**, safety comes first. Adult assembly is required. For your child's safety, do not let them play with this toy until it is fully assembled.

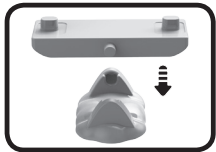
1. Place the **Base** on a flat surface and insert the **House** into the **Base**. Press down firmly, the house will click into place. Then insert the **Halle Piece** into the **House**.



2. Connect the **Tyre Swing** to the **Tree** and then insert the **Tree** into the **Tree Base**.

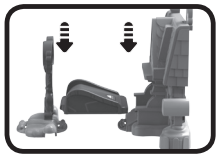


3. Connect the **Seesaw** to the **Seesaw Base**.



The play set may be configured in a variety of ways:

4. Connect the **Tree** and the **House** with the **Ramp Track**, as shown on the left. You can also connect the **Tree** to the **House** as shown on the right.





Once you've completed the above steps, you are ready to play! Mini characters from other sets (each sold separately) are also compatible.



PRODUCT FEATURES

1. On/Off Switch

To turn the unit **On**, slide the **On/Off Switch** to the **On**  position. To turn the unit **Off**, slide the **On/Off Switch** to the **Off**  position.



2. Automatic Shut-Off

To preserve battery life, **The Carson Playhouse** will automatically power down after approximately 45 seconds without input. The unit can be turned on again by pressing the **Mailbox Launcher** or triggering the **PlayZone Location** with a mini character.

NOTE:

If the unit powers down while playing, please install a new set of batteries.

ACTIVITIES

1. PlayZone Location

Place **Mini Cory**, **Mini Chrissy** or other Toot-Toot Cory Carson® mini characters (sold separately) on the **PlayZone Location** to trigger fun phrases and sounds from the show. The characters will flash with the sounds.



2. Mailbox Launcher

When a mini character is on the **PlayZone Location**, press the **Mailbox Launcher** to flip open the garage door and launch the mini character over the **Ramp Track**.



WARNING:

Do not aim at eyes or face.

Do not launch any object other than the projectile provided with this toy.

CARE & MAINTENANCE

1. Keep the unit clean by wiping it with a slightly damp cloth.
2. Keep the unit out of direct sunlight and away from any direct heat source.
3. Remove the batteries if the unit will not be in use for an extended period of time.
4. Do not drop the unit on hard surfaces and do not expose the unit to moisture or water.

TROUBLESHOOTING

If for some reason the unit stops working or malfunctions, please follow these steps:

1. Please turn the unit **Off**.
2. Interrupt the power supply by removing the batteries.
3. Let the unit stand for a few minutes, then replace the batteries.
4. Turn the unit **On**. The unit should now be ready to use again.
5. If the unit still does not work, install a new set of batteries.

If the problem persists, please contact our Consumer Services Department and a service representative will be happy to help you.

CONSUMER SERVICES

Creating and developing **VTech**[®] products is accompanied by a responsibility that we at **VTech**[®] take very seriously. We make every effort to ensure the accuracy of the information, which forms the value of our products. However, errors sometimes can occur. It is important for you to know that we stand behind our products and encourage you to call our Consumer Services Department with any problems and/or suggestions that you might have. A service representative will be happy to help you.

UK Customers:

Phone: 0330 678 0149 (from UK) or +44 330 678 0149 (outside UK)

Website: www.vtech.co.uk/support

Australian Customers:

Phone: 1800 862 155

Website: support.vtech.com.au

NZ Customers:

Phone: 0800 400 785

Website: support.vtech.com.au

PRODUCT WARRANTY/ CONSUMER GUARANTEES

UK Customers:

Read our complete warranty policy online at vtech.co.uk/warranty.

Australian Customers:

**VTECH ELECTRONICS (AUSTRALIA) PTY LIMITED –
CONSUMER GUARANTEES**

Under the Australian Consumer Law, a number of consumer guarantees apply to goods and services supplied by VTech Electronics (Australia) Pty Limited. Please refer to vtech.com.au/consumerguarantees for further information.

**Visit our website for more
information about our products,
downloads, resources and more.**

www.vtech.co.uk
www.vtech.com.au

